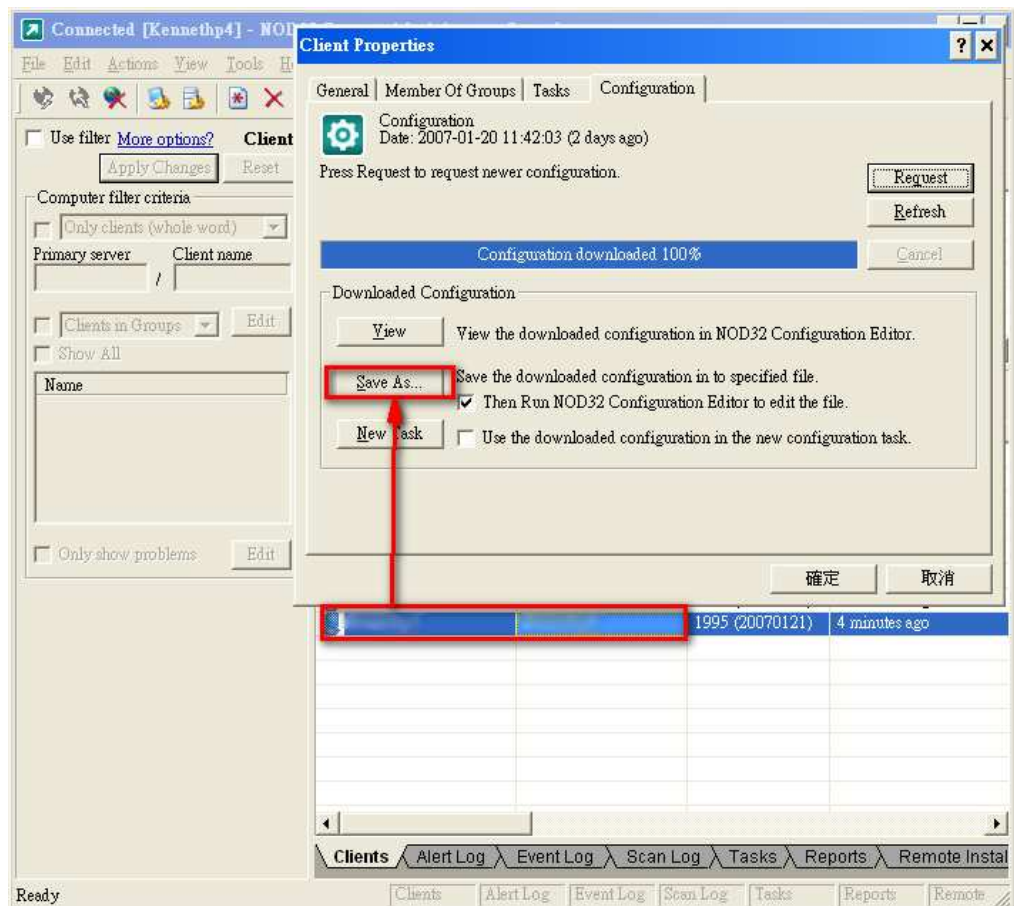


如何輸入兩種更新設定？

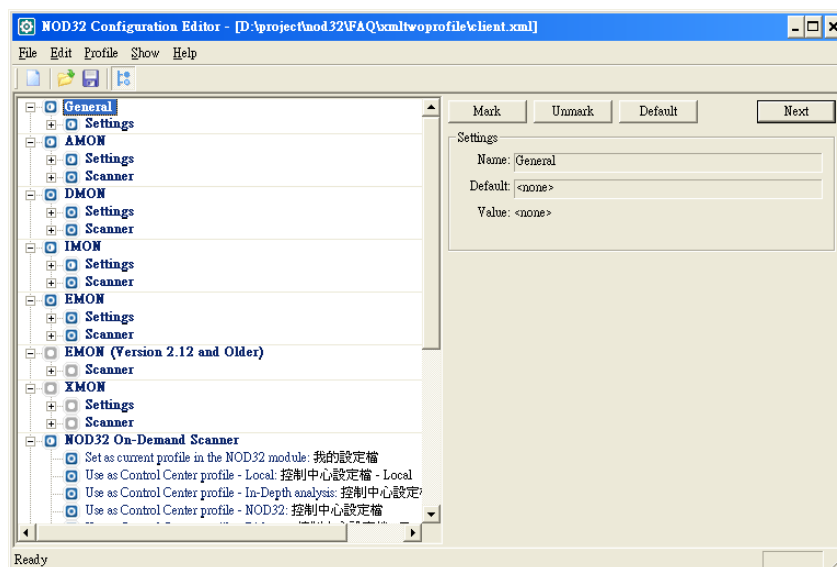
How to enter two of update setting.

步驟一. 請選擇一個用戶, 在客戶端下載最新的設定檔, 滑鼠右鍵選擇設定, 然後另存設定檔.

Step. 1 Please double click the user, right click the properties, and choose the configuration and downloaded the configuration file from the user then click "save as".



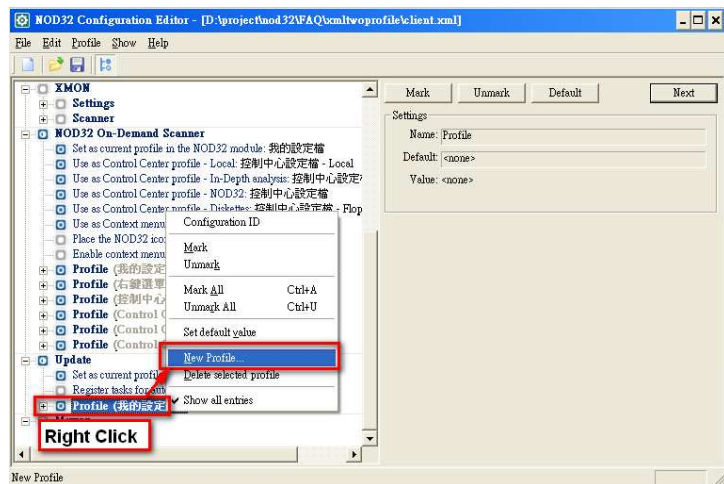
然後會自動彈出 NOD32 修改設定器
It will auto pop up NOD32 Configuration Editor.





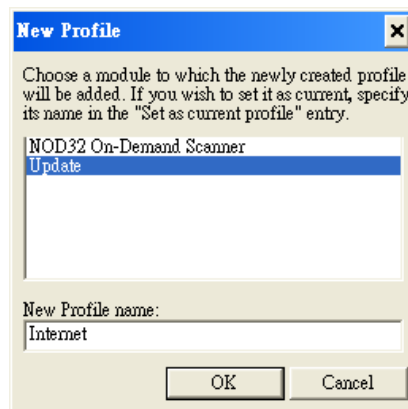
步驟二. 在更新內的子項目中選擇設定檔,
滑鼠右鍵選擇新的設定檔

Step. 2 Click "update" and find profile in the
sub directory, right click to choose "New Profile"

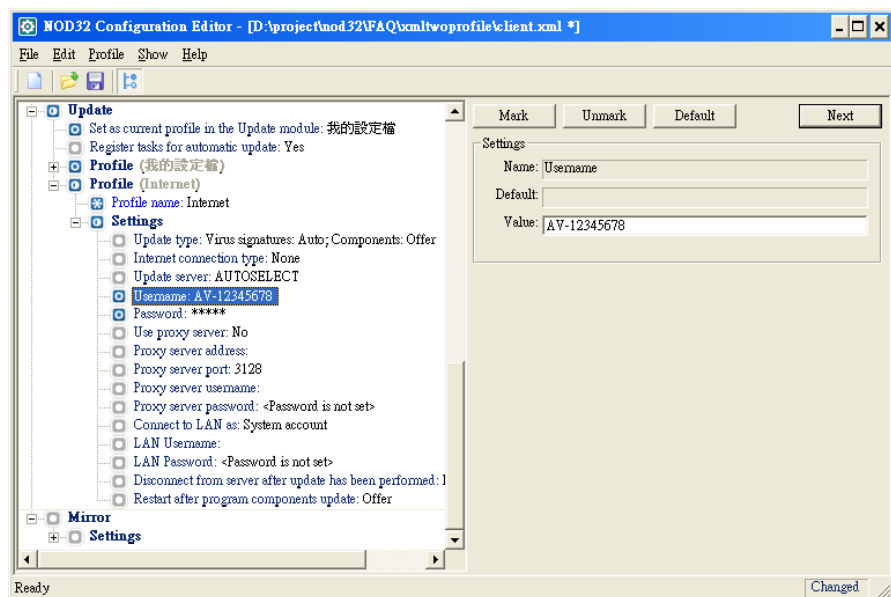


1. 選 "Update " 的同時鍵為 Internet

Please choose update and rename as Internet



選擇一般中的 Internet 設定
檔內的子項目中選擇設定,
然後輸入用戶名及密碼
Choose the profile of Internet
open the sub directory of
settings, Enter the Username
and Password.



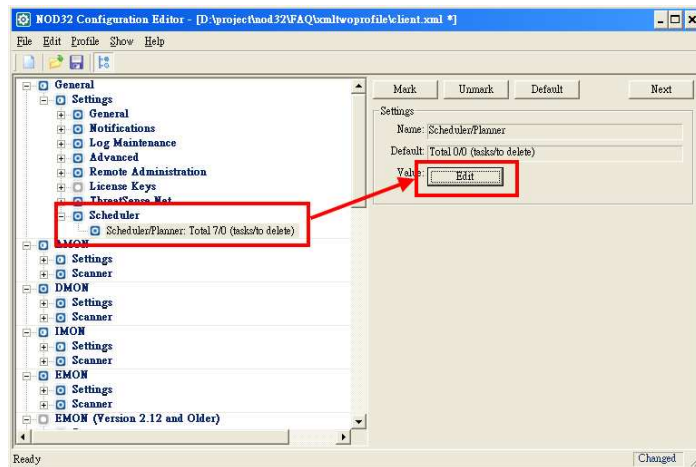


步驟三. 修改一般內的設定然後選擇排程器子項目中選擇排程器/計劃器.

Step. 3 Modify scheduler/Planner from

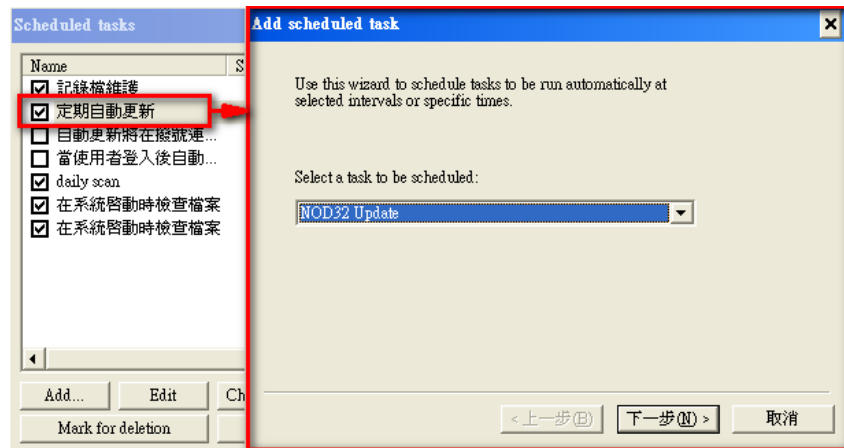
General ->Setting

->Scheduler->Scheduler/Planner.



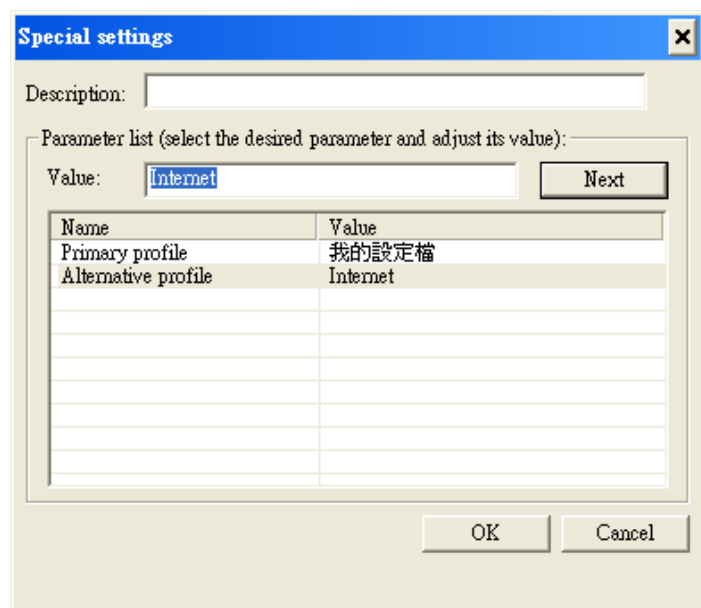
在定期自動更新內按修改, 按
下步至以下的設定版面.

In Regular automatic update, click
edit, you will see the following
screen.



在主設定檔請設定為我的設定檔, 可選擇的設定
檔請選擇 Internet.

Primary profile please set my profile, alternative profile
set internet.



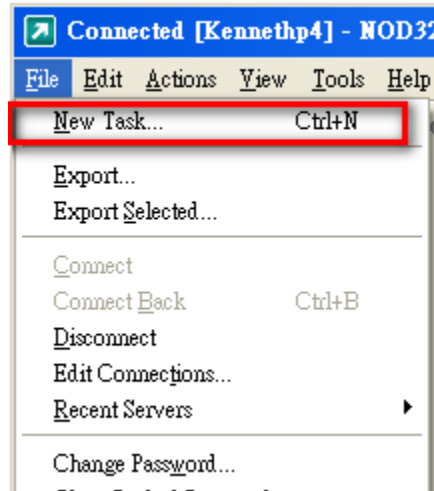


步驟四. 在 Remote Admin Console 派送設定檔

Step. 4 In Remote Admin Console push the configuration task

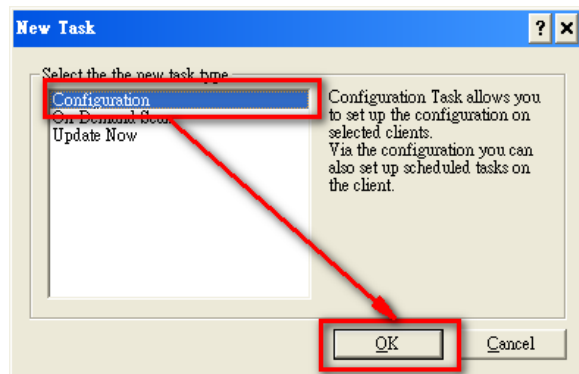
新增 Task

Click "File" to choose a New Task



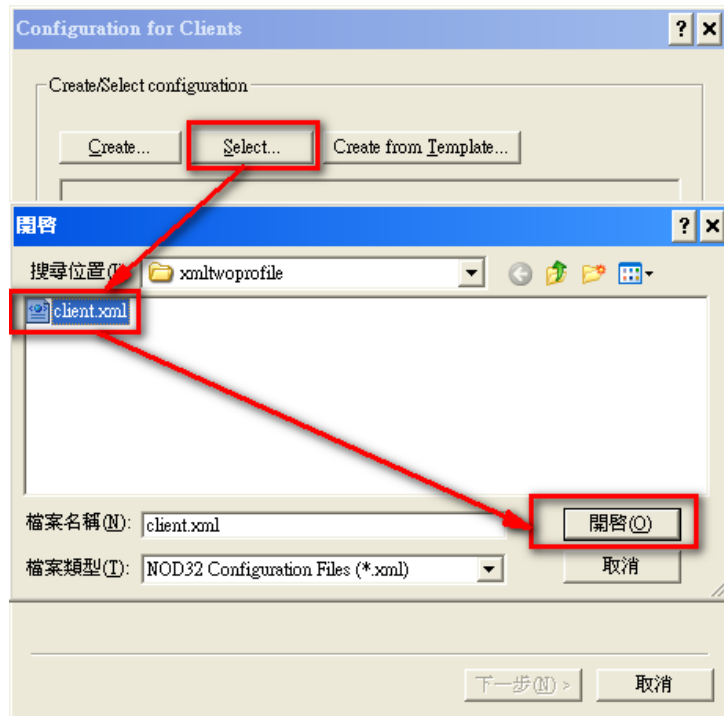
設定 Task

Setup the Task



選擇之前設定好的 XML

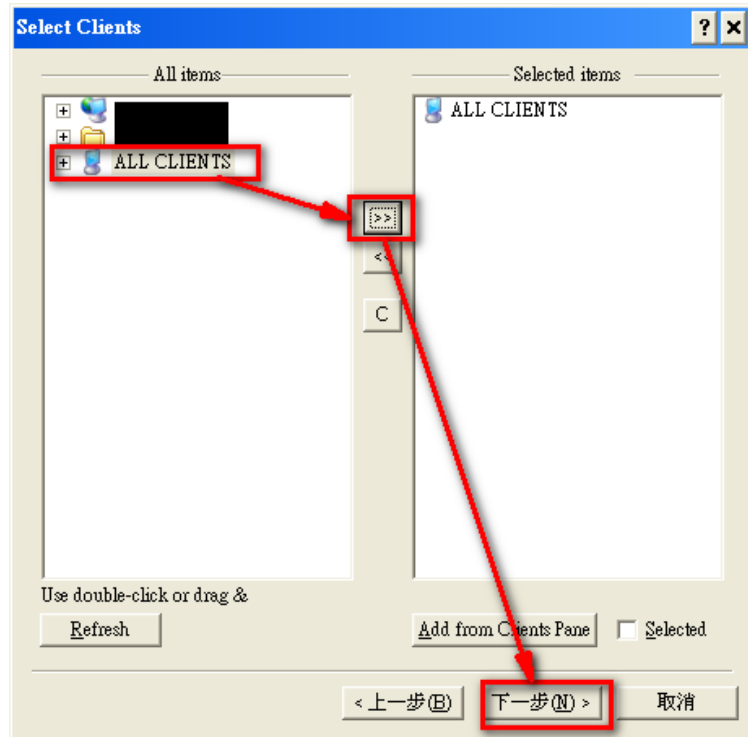
please select the configuration of xml





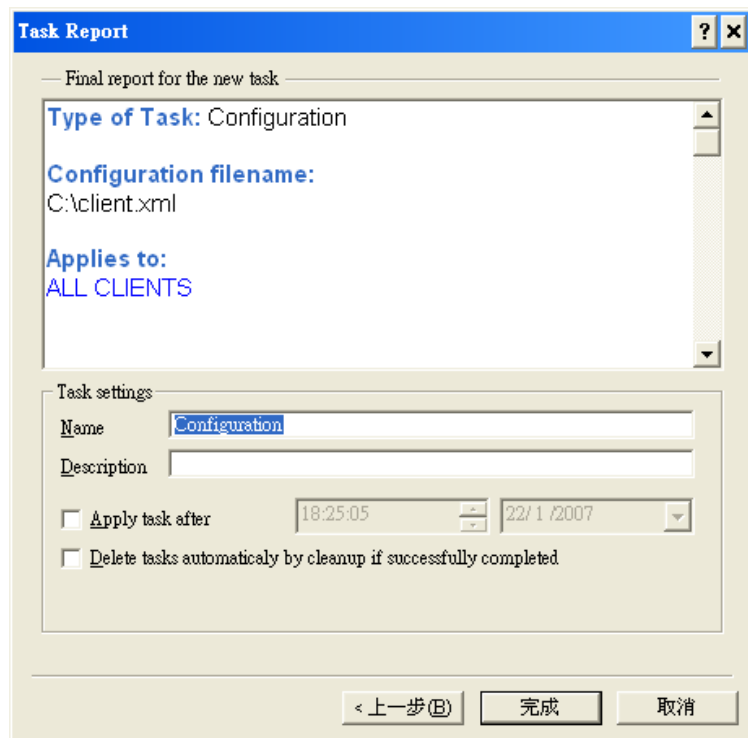
選擇要更新設定的客戶端

Choose the user who like to change the configuration and click "next" .



完成新增 Task

finish the new task





客戶端會自動更新設定檔

The client will auto update the profile.

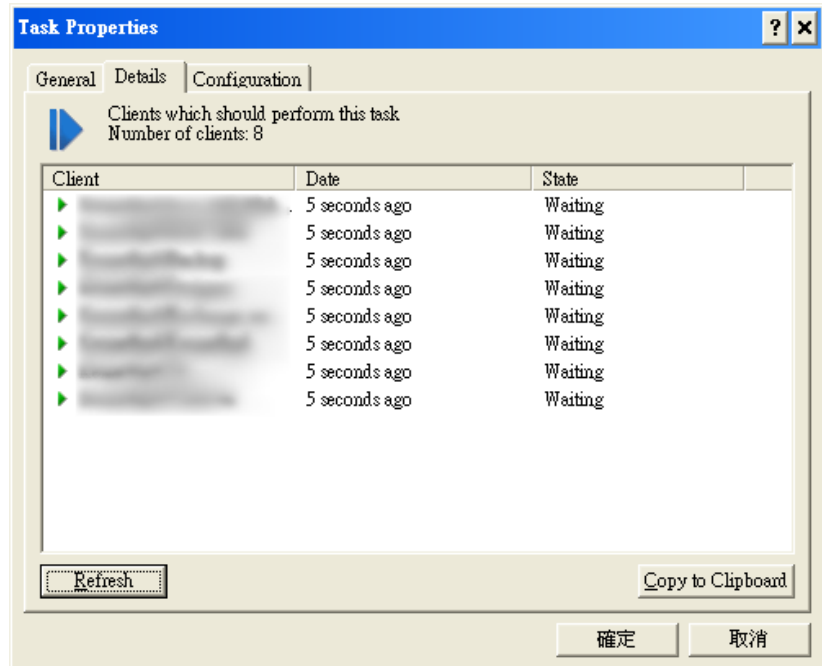
要等五至十分鐘, 待所有客戶端與

RAS 連線及更新設定

After 5 - 10 minutes, when the client get

the configuration task and update the RAS

connection and update setting.



步驟五. 完成後,可以在

客戶端中看一看,計劃

器/排程器是否有一個

新的設定.

Step. 5 When finish the

setting profile. You can

check the setting of client,

as like the fig.1

